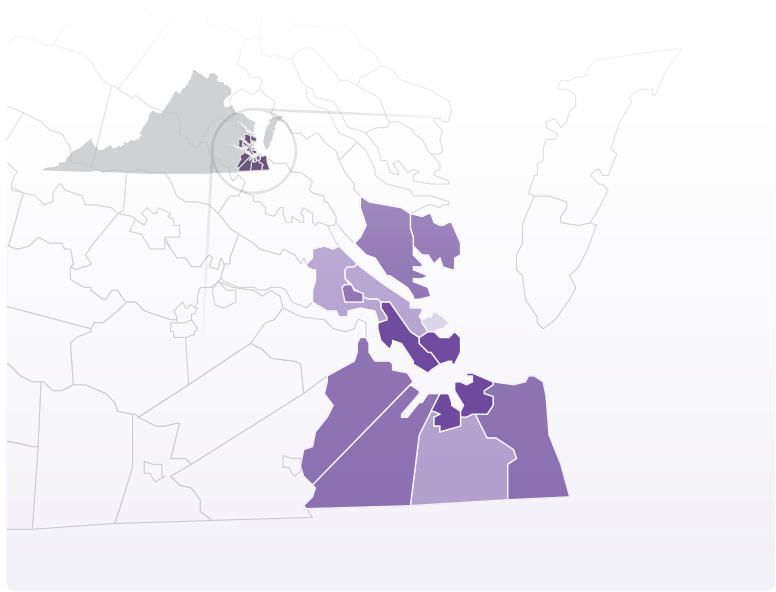


PERCENTAGE OF CHILDREN ECONOMICALLY DISADVANTAGED

1-14% 15-30% 31-44% 45-59% 60-75%



Children living below 200% of poverty level are economically disadvantaged and live in families that struggle to meet basic needs:
Food, Housing, Utilities, Child Care and Transportation

2 IN 5

children are economically disadvantaged
IN THE HAMPTON ROADS REGION

THAT'S

148,912 children who are economically disadvantaged

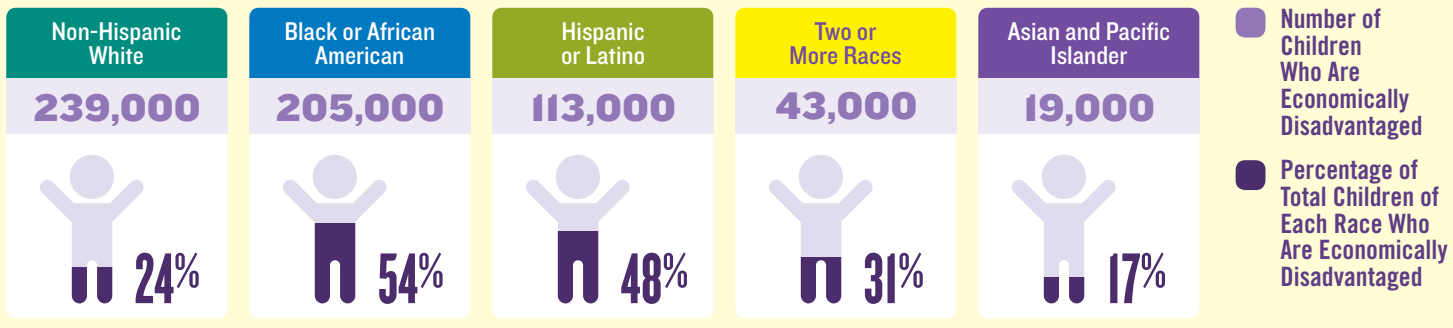
ENOUGH TO FILL

2,978 SCHOOL BUSES

ECONOMICALLY DISADVANTAGED CHILDREN IN VIRGINIA

1 IN 3 CHILDREN ARE ECONOMICALLY DISADVANTAGED

Children of every race and ethnic group face hardship across Virginia. One in four White children live in families that struggle to meet basic needs. For Black and Hispanic/Latino children, one in two live in families that struggle to meet basic needs. Over time, a variety of federal, state, and local policy choices have had disproportionate impacts on families living in certain regions or belonging to certain racial and ethnic groups. Those effects are still felt today. To improve economic opportunity, we must recognize children have different starting points, which may require different policy solutions.



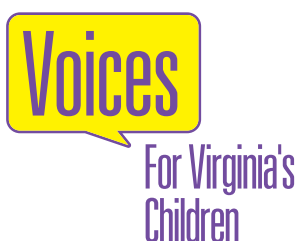
EVERY CHILD IN VIRGINIA SHOULD HAVE THE OPPORTUNITY TO THRIVE

A multi-pronged policy platform is needed to improve the economic opportunity of Virginia's children.

Access to Affordable Healthcare	High-Quality Early Learning Opportunities	Two-Generation Supports	Support in Schools	Support For Children in Foster Care	Continued Transformation of the Juvenile Justice System

DEMOGRAPHIC		ECONOMIC WELL-BEING				EDUCATION		HEALTH		SAFETY
Locale	Total Population Under 18	Number of Children in Poverty (Below 100% FPL*)	Percentage of Children in Poverty	Number of Children Economically Disadvantaged (Below 200% FPL*)	Percentage of Children Economically Disadvantaged	Pass Rate of Third Graders on SOL Reading Test	On-Time High School Graduation Rate	Low-Income Children w/o Health Insurance (Below 200% FPL*)	Births to Mothers with Less Than 12th Grade Education	Rate of Children Entering Foster Care (per 1,000)
Chesapeake	56,957	8,243	15%	17,202	31%	76%	93%	1,387	5%	0.4
Gloucester	7,677	647	8%	2,376	31%	78%	91%	254	5%	2.4
Hampton	30,258	7,152	24%	14,922	51%	71%	91%	994	5%	1.5
Isle of Wight	7,682	1,496	20%	2,634	35%	83%	93%	230	4%	0.5
James City	14,644	1,529	11%	3,783	26%	N/A	N/A	500	6%	0.3
Mathews	1,512	169	11%	506	34%	68%	96%	79	8%	0
Newport News	42,782	10,075	24%	21,324	51%	66%	92%	1,457	7%	1
Norfolk	49,893	14,874	30%	28,330	58%	64%	85%	1,786	11%	1.2
Poquoson	2,765	126	5%	327	12%	86%	92%	60	4%	N/A
Portsmouth	22,626	6,663	30%	11,999	54%	69%	89%	553	12%	1.9
Suffolk	21,791	3,835	18%	8,196	38%	69%	87%	612	8%	0.5
Virginia Beach	103,435	12,674	12%	33,145	33%	83%	91%	3,150	4%	1.1
Williamsburg	1,601	306	20%	665	44%	83%	91%	69	9%	0.6
York	16,374	1,325	8%	3,503	22%	88%	96%	465	2%	0
Regional Total	379,997	69,114	18%	148,912	39%	-	-	11,596	-	0.88
State Total	1,864,668	280,144	16%	621,843	34%	76%	91%	62,032	9%	1.5

*FPL stands for Federal Poverty Level. The federal poverty definition consists of a series of thresholds based on family size and composition. In 2015, a 200% poverty threshold for a family of two adults and two children was \$48,500.



We champion public policies that improve the lives of Virginia's children.

Voices is the home to the KIDS COUNT Data Center, which is generously funded by the Annie E. Casey Foundation.

701 East Franklin Street, Suite 807
Richmond, Virginia 23219
804.649.0184 • info@vakids.org

To learn more or get involved, visit www.vakids.org.

Sources:
Kids Count Data Center; U.S. Census Bureau, American Community Survey 2014 & 2015; Virginia Department of Education 2015 & 2016; Virginia Department of Health 2014; Virginia Department of Social Services 2015 & 2016; Virginia Department of Juvenile Justice Resource Guide 2016