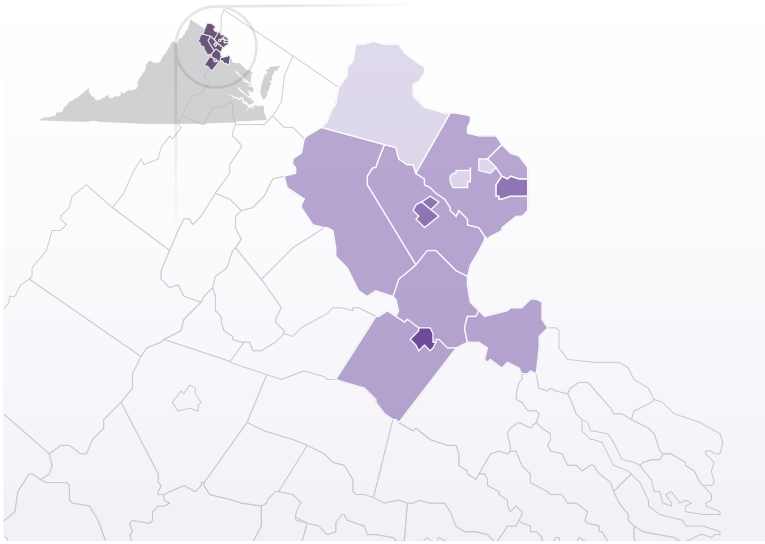


## PERCENTAGE OF CHILDREN ECONOMICALLY DISADVANTAGED

1-14%   15-30%   31-44%   45-59%   60-75%



Children living below 200% of poverty level are economically disadvantaged and live in families that struggle to meet basic needs:

Food, Housing, Utilities, Child Care and Transportation

**1 IN 5**

children are economically disadvantaged  
**IN THE NORTHERN REGION**

THAT'S

**143,432** children who are economically disadvantaged

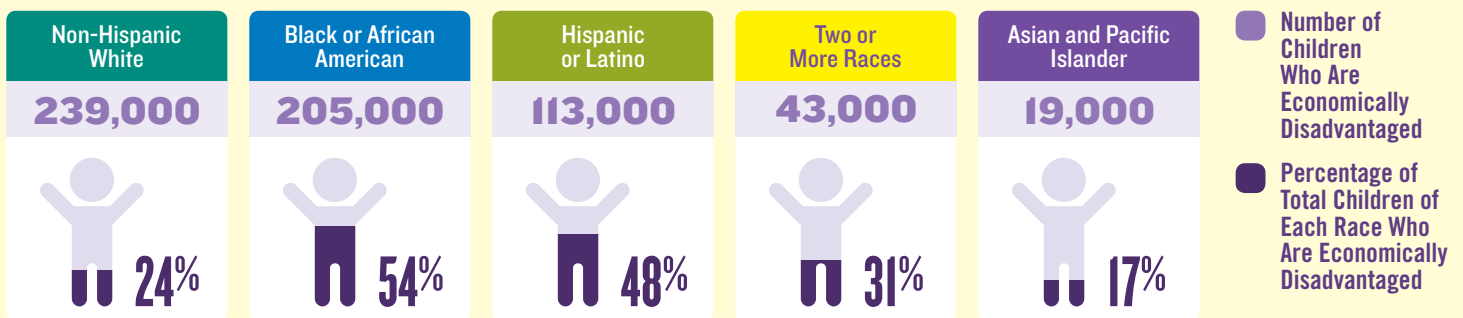
ENOUGH TO FILL

**2,869** SCHOOL BUSES

## ECONOMICALLY DISADVANTAGED CHILDREN IN VIRGINIA

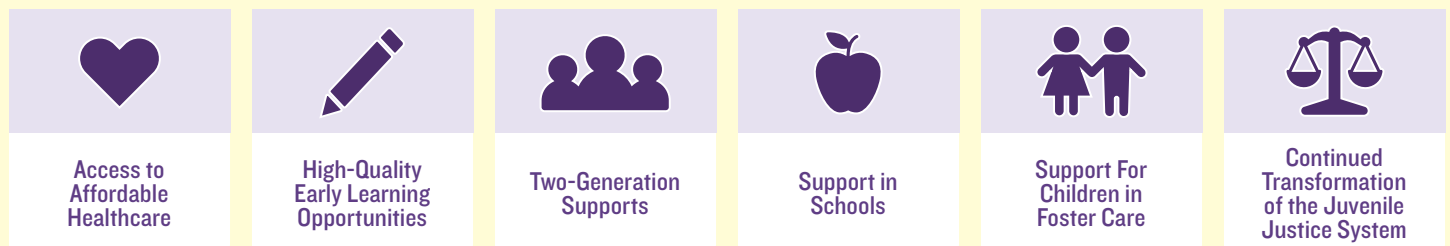
### 1 IN 3 CHILDREN ARE ECONOMICALLY DISADVANTAGED

Children of every race and ethnic group face hardship across Virginia. One in four White children live in families that struggle to meet basic needs. For Black and Hispanic/Latino children, one in two live in families that struggle to meet basic needs. Over time, a variety of federal, state, and local policy choices have had disproportionate impacts on families living in certain regions or belonging to certain racial and ethnic groups. Those effects are still felt today. To improve economic opportunity, we must recognize children have different starting points, which may require different policy solutions.



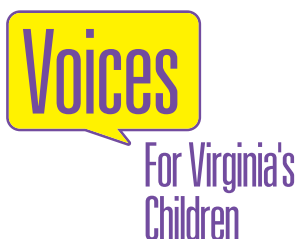
## EVERY CHILD IN VIRGINIA SHOULD HAVE THE OPPORTUNITY TO THRIVE

A multi-pronged policy platform is needed to improve the economic opportunity of Virginia's children.



DEMOGRAPHIC		ECONOMIC WELL-BEING				EDUCATION		HEALTH		SAFETY
Locale	Total Population Under 18	Number of Children in Poverty (Below 100% FPL*)	Percentage of Children in Poverty	Number of Children Economically Disadvantaged (Below 200% FPL*)	Percentage of Children Economically Disadvantaged	Pass Rate of Third Graders on SOL Reading Test	On-Time High School Graduation Rate	Low-Income Children w/o Health Insurance (Below 200% FPL*)	Births to Mothers with Less Than 12th Grade Education	Rate of Children Entering Foster Care (per 1,000)
Alexandria	26,459	3,359	13%	8,752	33%	75%	82%	1,150	10%	1.2
Arlington	37,293	4,205	11%	8,232	22%	89%	91%	1,096	6%	1.6
Fairfax City	4,854	187	4%	683	14%	N/A	N/A	194	12%	N/A
Fairfax County	271,014	20,469	8%	53,447	20%	81%	92%	7,976	8%	0.4
Falls Church	3,408	95	3%	313	9%	87%	100%	61	4%	N/A
Fauquier	16,337	1,094	7%	3,190	20%	76%	95%	527	9%	1.6
Fredericksburg	5,670	1,080	20%	2,763	50%	63%	89%	255	14%	2.3
King George	6,585	465	7%	1,528	23%	77%	95%	173	6%	1.5
Loudoun	104,355	4,133	4%	12,497	12%	84%	96%	1,999	6%	0.2
Manassas	11,046	1,541	14%	4,093	37%	73%	80%	605	27%	0.8
Manassas Park	4,248	423	10%	1,382	33%	64%	86%	215	19%	0.5
Prince William	123,183	11,942	10%	30,003	25%	78%	92%	4,362	13%	0.5
Spotsylvania	33,341	3,552	11%	8,903	27%	74%	90%	1,082	9%	1.9
Stafford	37,258	2,577	7%	7,646	21%	75%	93%	946	6%	0.6
<b>Regional Total</b>	<b>685,051</b>	<b>55,122</b>	<b>8%</b>	<b>143,432</b>	<b>21%</b>	-	-	<b>20,641</b>	-	<b>1.1</b>
<b>State Total</b>	<b>1,864,668</b>	<b>280,144</b>	<b>16%</b>	<b>621,843</b>	<b>34%</b>	<b>76%</b>	<b>91%</b>	<b>62,032</b>	<b>9%</b>	<b>1.5</b>

\*FPL stands for Federal Poverty Level. The federal poverty definition consists of a series of thresholds based on family size and composition. In 2015, a 200% poverty threshold for a family of two adults and two children was \$48,500.



**We champion public policies that improve the lives of Virginia's children.**

Voices is the home to the KIDS COUNT Data Center, which is generously funded by the Annie E. Casey Foundation.

701 East Franklin Street, Suite 807  
Richmond, Virginia 23219  
804.649.0184 • info@vakids.org

**To learn more or get involved, visit [www.vakids.org](http://www.vakids.org).**

**Sources:**  
Kids Count Data Center; U.S. Census Bureau, American Community Survey 2014 & 2015; Virginia Department of Education 2015 & 2016; Virginia Department of Health 2014; Virginia Department of Social Services 2015 & 2016; Virginia Department of Juvenile Justice Resource Guide 2016