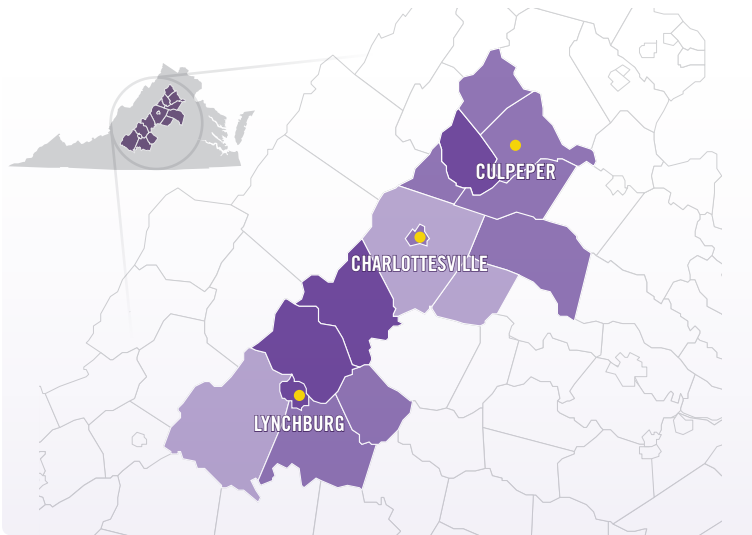
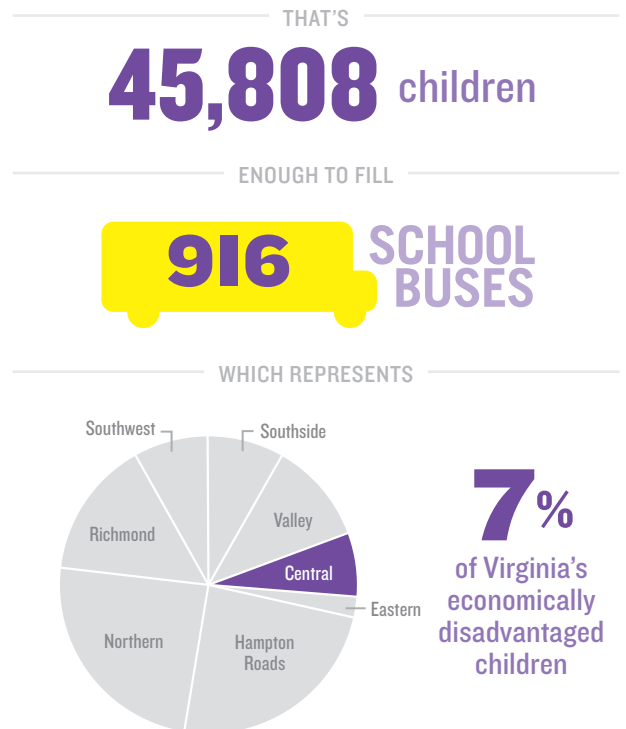


1 IN 3 children are economically disadvantaged in the Central Region

15-30% 31-44% 45-59%

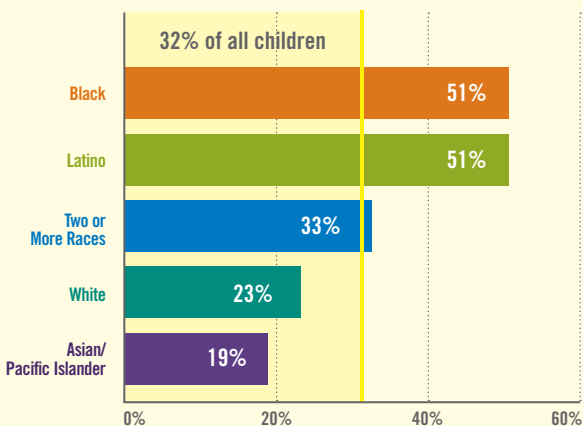


Children living below 200% of the poverty level are economically disadvantaged and live in families that struggle to meet basic needs: food, housing, utilities, child care, and transportation.



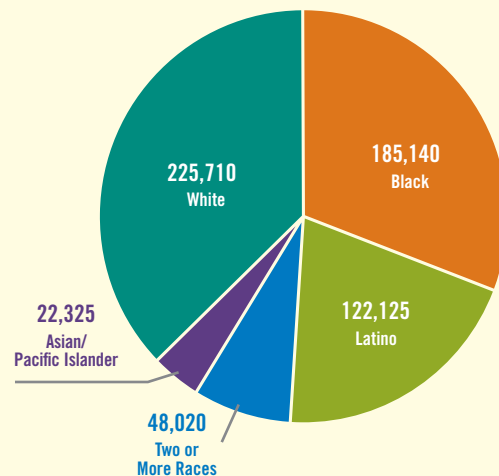
Virginia children of every race and ethnicity face hardship

BLACK AND LATINO CHILDREN ARE MORE LIKELY TO GROW UP IN FAMILIES THAT STRUGGLE TO MEET BASIC NEEDS



Percent of Children Living Below 200% of Poverty by Race and Ethnicity

WHITE CHILDREN MAKE UP THE LARGEST NUMBER OF ECONOMICALLY DISADVANTAGED CHILDREN IN THE COMMONWEALTH



Number of Children Living Below 200% of Poverty by Race and Ethnicity

Over time, a variety of federal, state, and local policy choices have had disproportionate impacts on families living in certain regions or belonging to certain races and ethnicities. Those effects are still felt today. To improve economic opportunity, we must recognize children have different starting points, which may require different policy solutions.

DEMOGRAPHIC		ECONOMIC WELL-BEING		EDUCATION			HEALTH		SAFETY
Locale	Total Child Population (Ages 0-17)	Number of Children Economically Disadvantaged (Below 200% FPL*)	Percent of Children Economically Disadvantaged (Below 200% FPL*)	Pass Rate of Kindergarteners on PALS-K Exam (Fall Kindergarten Readiness Exam)	Pass Rate of Third Graders on SOL Reading Exam		Number of Low-Income Children without Health Insurance (Below 200% FPL*)	Percent of Prenatal Care Beginning in 1st Trimester	Rate of Children Entering Foster Care (Per 1,000 Children)
					Economically Disadvantaged	Not Economically Disadvantaged			
Albermarle	21,721	5,516	25%	81%	42%	85%	808	79%	1.4
Amherst	6,437	2,882	45%	82%	61%	77%	204	85%	1.9
Appomattox	3,348	1,361	41%	95%	62%	79%	121	83%	4.7
Bedford County	16,059	4,659	29%	84%	69%	81%	354	90%	1.8
Campbell	11,310	4,773	42%	91%	62%	82%	305	86%	1.2
Charlottesville	7,084	2,917	41%	86%	52%	93%	291	79%	8.6
Culpeper	12,350	4,071	33%	79%	51%	76%	413	84%	2.4
Fluvanna	5,467	1,164	21%	91%	59%	86%	129	83%	1.1
Greene	4,637	1,777	38%	72%	52%	78%	161	75%	0.2
Louisa	7,171	2,830	39%	89%	55%	80%	267	80%	3.8
Lynchburg	15,169	8,068	53%	83%	57%	85%	465	82%	3.7
Madison	2,778	1,524	55%	79%	49%	77%	118	80%	6.8
Nelson	2,940	1,405	48%	78%	44%	81%	139	81%	3.2
Orange	7,736	2,438	32%	78%	67%	83%	281	85%	3.5
Rappahannock	1,365	423	31%	88%	58%	89%	71	73%	6.9
Regional Total	125,572	45,808	36%	—	—	—	4,127	83%	3.4
State Total	1,865,556	620,201	33%	84%	62%	84%	48,166	85%	1.5

*FPL stands for Federal Poverty Level. The federal poverty definition consists of a series of thresholds based on family size and composition. In 2016, a 200% poverty threshold for a family of two adults and two children was \$48,600.

Data helps us ask more questions about what is happening in a community and often does not provide any direct answers. To learn more about the data, sources, or child well-being in your community, please contact KIDS COUNT Director Beth Nolan at beth@vakids.org.

We champion public policies that improve the lives of Virginia's children.

Voices is the home to the KIDS COUNT Data Center, which is generously funded by the Annie E. Casey Foundation.

1606 Santa Rosa Road, Suite 109
 Henrico, Virginia 23229
 804.649.0184 • info@vakids.org

To learn more or get involved, visit www.vakids.org.

Sources:
 U.S. Census Bureau, American Community Survey & Small Area Estimates 2016, UVA Curry School of Education Academic Year 2017, Virginia Department of Education Academic Year 2016, Virginia Department of Health 2015, Virginia Department of Social Services State Fiscal Year 2017

The data reflects the most recently available information, which results in some variation of years by indicator.

PRODUCED IN MAY 2018

